

# System Restore Setting

## IF you use Windows turn this option ON!

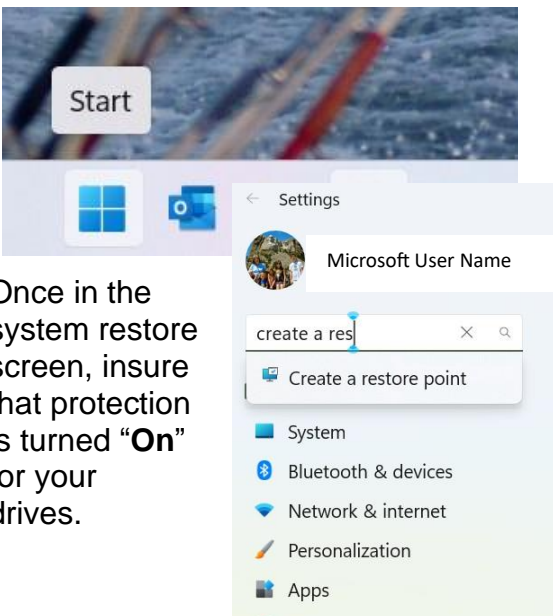
System Restore is a Microsoft® Windows® tool designed to protect and repair computer software. System Restore takes a "snapshot" of specific system files and the Windows registry and saves them as Restore Points. When an installation fails or, data corruption occurs, System Restore can return a system to working condition without you having to reinstall the operating system. It repairs the Windows environment by reverting back to the files and settings that were saved in the restore point.

It does not affect personal files on your computer.

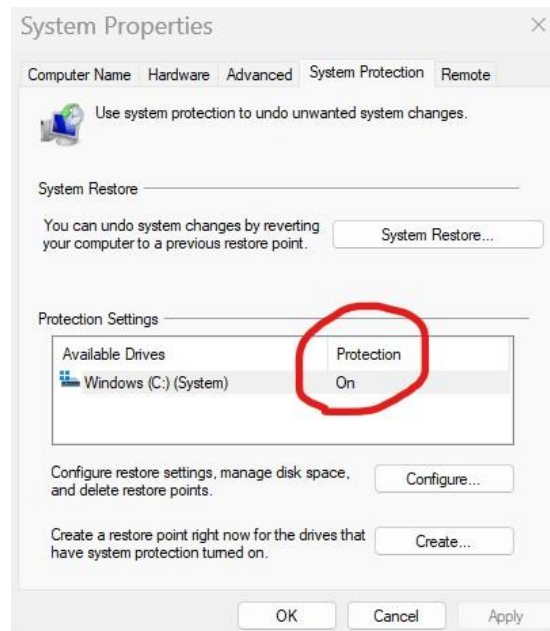
Once you turn System Restore to "On" for drives on your computer, it automatically recognizes when it should create a restore point such as daily, before updates etc. You can also create your own restore point. The amount of space you allow for restore points determines how many it will save.

There is very little difference in how to turn on system restore in Windows 11 and Windows 10.

To check if you have a restore point, go to the "Start" button on your menu bar, then go to **Settings**. In the settings search box start typing "Create a restore point". It will bring up the option to create a restore point. Just click on that. This will open the system protection window, and you will want to make sure that system protection is turned on.



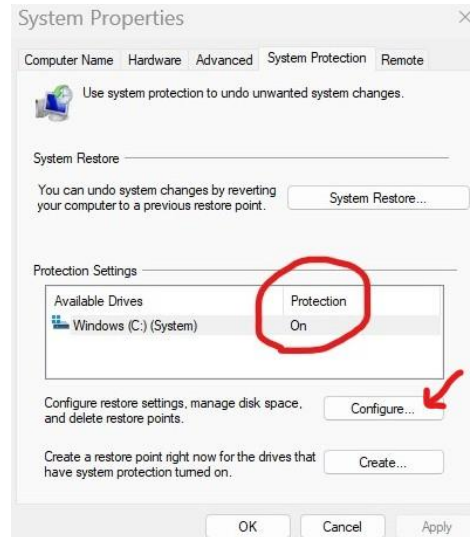
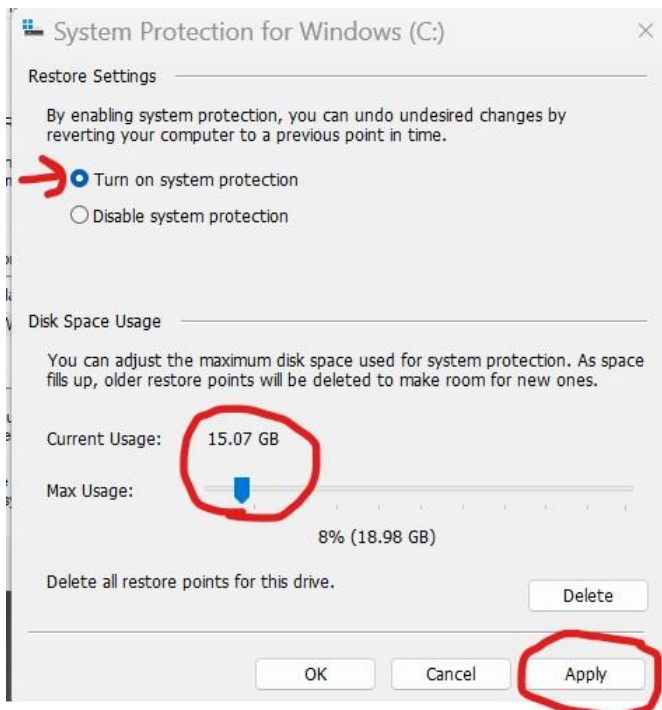
Once in the system restore screen, insure that protection is turned "On" for your drives.



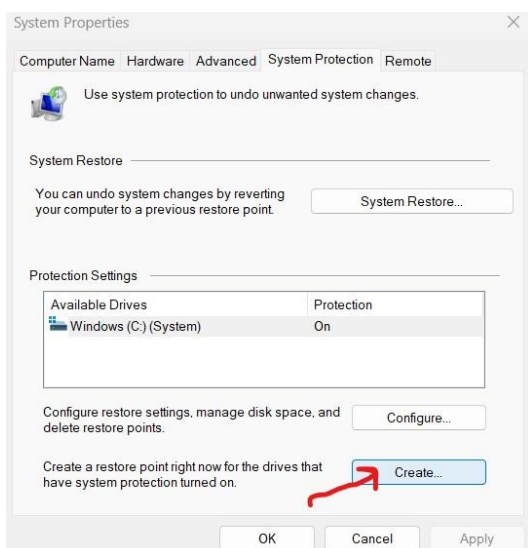
If “Protection” is not turned on you will click on “Configure” which takes you to a window where you can turn it on and set the size of the file storage for your restore points.

Click on “Configure”.

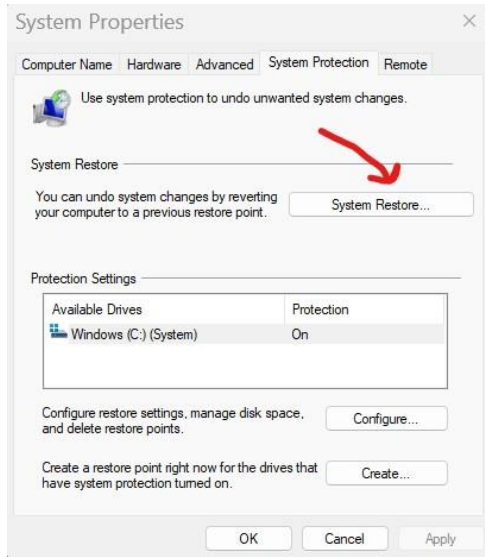
Next you will want to ensure that there is enough space to keep at least 2 restore points. Setting the “Max Usage” anywhere between 5 and 10 percent should be sufficient.



You will be able to see how much space is being used. To adjust, move the **Max Usage** arrow to the desired setting. Once you have determined how much space to use, click on “OK”, then proceed to create a restore point if you have not yet done so.

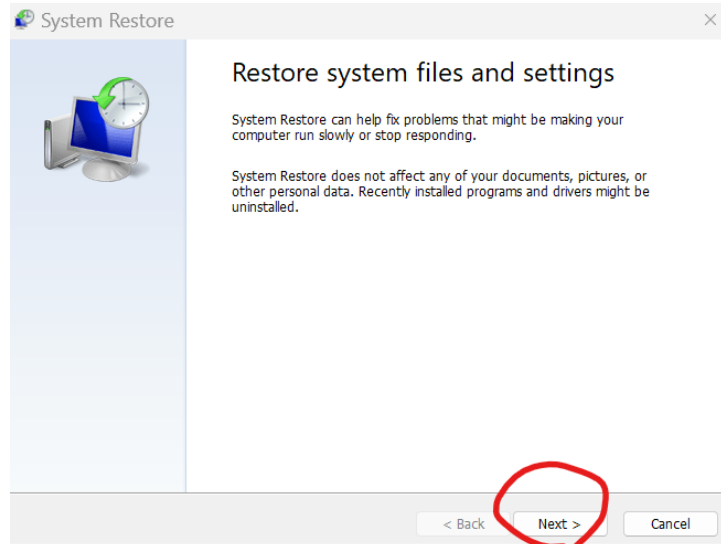


To create your restore point just click on “Create”. After you create a restore point, your computer will create additional restore points for you automatically in the future whenever a Windows update occurs or you install other apps or programs.



To see the restore points you have, click on **“System Restore”** and then select **“Choose a different restore point”** so you can see all of your restore points.

Click on **“Next”** and it will show you the most recent restore points.



If you need to go back further in time, or you want to see all of your restore points, click on the **“Show more restore points”** in the bottom left corner of the window.

To proceed with a system restore you would select one of the restore points and then click **“Next”** and follow the instructions.

This process could take a considerable amount of time. Be patient.

Otherwise if you are just viewing the activity just hit **“Cancel”**

Sandy George, 2025

